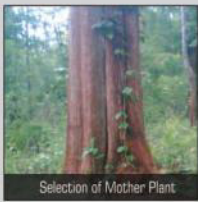


WORLD'S EXCLUSIVE TISSUE CULTURED TEAK PLANT PRODUCTION



Selection of Mother Plant



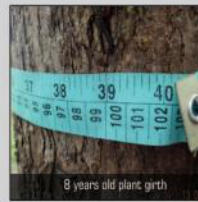
Ready to Plant



3 months old plants



8 years old plants



8 years old plant girth

CUTTING AND YIELD : 440 MBT teak plants can be planted per acre & the yield starts from 8th year.

8th
year **25 CFT**

12th
year **75 CFT**

17th
year **150 CFT**

Plant Produced by :



Mother Agri Biotech Laboratories India Pvt Ltd
#196/2, Gollarahatti, Magadi Main Road,
(Near NICE Road), Bangalore- 560091
W: www.motherbiotech.in

Tele : +91 87904 31313
E-mail : admin@motherbiotech.in

OUR OTHER PRODUCTS: Our products give 90-95% positive results



Root Promoter



Bud Inducer



Stem Rot Inhibitor



Thrips Controller



Shoot Growth Regulator



Flower Inducer



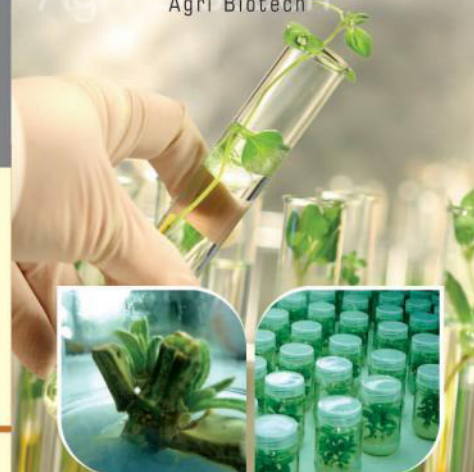
Pest Controller

Our research team is in constant experiments for innovating new and effective technologies in the field of Agri Biotech.

MBT TEAK

Tissue Cultured Teak Plant
(World's Exclusive)

Bringing Innovation in
Agri Biotech



[linkedin.com/in/motheragribiotech](https://www.linkedin.com/in/motheragribiotech) www.motherbiotech.in

twitter.com/motherbiotech facebook.com/motheragribiotech

**NATURALLY GROWN/
SEED/ STUMP TEAK**

TISSUE CULTURED TEAK

**DIFFERENCE
BETWEEN
TISSUE
CULTURED TEAK
&
NATURALLY
GROWN/ SEED/
STUMP TEAK**



Shoot grows to one side of the root

Shoot grows in continuation with the root

Takes Minimum 35 years for harvest.

Ready to harvest from 8th year.

No uniformity

Uniformity in height and girth.

Not resistant to pests and diseases.

Mother plant is selected after 60 characteristic analysis, hence the clone is highly resistant to diseases and pests.

Each Plant has its own characteristics, hence the plant has many branches and flaky trunk effecting the volume and quality of the wood.

These plants are developed from the tissue of a selective mother plant with characteristics of non flaky truck.

Due to its irregular growth, it is inefficient as a fencing plant.

Prevents up to 30% wind damage to other crops when chosen as a fencing plant because of its uniform growth.

According to NABARD abstract, returns will be 5 times the investment in 17 years.

Gives upto 60 times returns against the investment after 17 years.

Seasonal plantation.

Can be planted throughout the year.

Survival rate 35-60%

Survival rate 90-95%

[| V R U K S H O R A K S H A T H I R A K S H I T H A H A |]

Keeping in view that trees provide food, shelter, medicine, fuel and wood our culture promotes the idea of producing, planting, protecting and donating trees to the society. Conserving a tree is a pious action.

Began with this zeal of producing the best tissue cultured teak clones, Mother Biotech has established an ultramodern tissue culture laboratory producing 9 different teak clones and is involved in distributing it to the farmers based on their Argo climatic conditions.

Due to fast growth combined with high returns it has very good demand in the market.

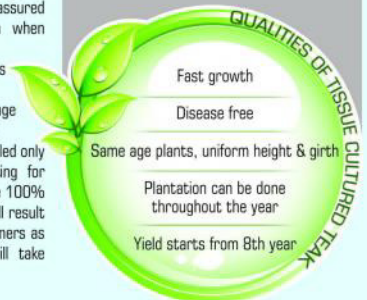


VISION: Our vision is to undertake research and develop sustainable agro products to meet and reach every agricultural requirement globally and be a prime participant in reduction of global warming.

MISSION: Our mission is to involve global farmers in particular and the community in general to grow green by providing the world with authentic tissue cultured plants and allied products and exponentially multiplying returns on the capital investment simultaneously.

KING OF TIMBER – TEAK WOOD

Teakwood plays a major role in the timber industry. It is in high demand as compared to other wood both in the domestic and international markets. India dominates global teakwood consumption. Due to its assured and high economical returns even when cultivated in dry land, Government of India is encouraging teak plantations massively through various subsidized schemes. The rising demand and shortage of supply resulted in sharp rise of teak log price. This huge demand can be fulfilled only by encouraging teak plantation. Opting for Tissue cultured teak plantation will give 100% yield in short span of 8 years which will result in good economical returns to the farmers as compared to teak stumps which will take longer time for yield



**WORLD'S EXCLUSIVE
TISSUE CULTURED TEAK PLANTS
PRODUCTION**